



YOUR ELECTRICAL EXPERTS

Banned Lamps

Beyond the Bans



Fusion Luminares Lighting Range 2 - 8
Fusion Lamps Range 10 - 19

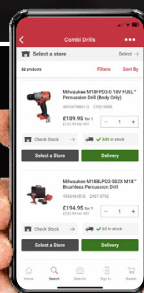
Prices valid until April 2026



Scan and shop with the App.

The easy way to order.

Download now for FREE





Contents

LED Lamp Alternatives

G23 2 Pin LED Single Compact Lamps.....	05
G24D 2 Pin LED Double Compact Lamps.....	05
G24Q 4 Pin LED Double Compact Lamps.....	05
GX24Q 4 Pin LED Triple Compact Lamps.....	05
2G11 4 Pin LED PLL Lamps.....	05
GR8 2D 2 Pin LED Lamps.....	06
GR10q 2D 4 Pin LED Lamps.....	06
8W LED CCT Selectable Gear Tray.....	06
16W LED CCT Selectable Gear Tray.....	06
LED T5 Glass Tubes.....	07
LED T8 Glass Tubes	07
LED T5 Tri-Colour Glass Tubes.....	07
LED T8 Tri-Colour Glass Tubes.....	07
LED GY6.35 Capsule Lamps	08
2W LED G4 Capsule Lamps	08
3.3W LED G9 Capsule Lamps	08
4.4W LED G9 Capsule Lamps	08

LED Luminaire Alternatives

LED Tri-Colour Battens IP20.....	11
LED Non-Corrosive Fittings IP65	12
LED Linear Vapour Proof Fittings IP65.....	13
LED Slimline Colour Selectable Under Cabinet Lights IP20.....	13
Backlit LED Panels IP20	14
40W Panel Frame IP20	15
12W / 16W Dome LED Tri-Colour Bulkheads IP65.....	16
16W Quad LED Tri-Colour Square Bulkheads IP65	17
LED Circular Flexi-Fit Tri-Colour Downlights IP20.....	18
LED CCT Low Profile Commercial Downlights IP20	19
2W Maintained Emergency Conversion Pack	19
4.1W Emergency Conversion Kit IP20	19

Banned Lamps

UK Lamp Market Bans

The lamps sector has undergone major changes in the last fifteen years, most of which have been driven by the move towards greater energy efficiencies and lower carbon emissions.

As part of the EU Restriction of Hazardous Substances (RoHS) directive. The fluorescent lamp ban aimed to reduce mercury use in electrical or electronic equipment. Therefore, September 2023, February 2024 and February 2025 witnessed new regulations requiring the phase out of Fluorescent Lamps from the UK market.

These phase outs meant that no further product from the stipulated dates could be imported or manufactured in the UK. However any products already held in stocks could still be sold and installed.

The UK government states that this new legislation will enforce the significant change to more energy efficient and longer lasting LED lamps. It is claimed this will stop 1.26 million tonnes of carbon being emitted annually and will save consumers an average of £75 each year on energy bills.

UK Lamp Ban Timeline

September 2023

T8 Fluorescent Tubes [2ft, 4ft & 5ft]



Mains Voltage Halogen Capsules [G4, GY6.35 G9 Cap]



February 2024

Compact Fluorescent Lamps [CFL's]



T5 Fluorescent Tubes [all lengths]



T8 Fluorescent Tubes [remaining lengths]



February 2025

Compact Fluorescent Lamps [2D 28W/38W]



It is important to note that suppliers are able to sell through existing stocks, also any banned products placed on the market before each enforcement date may also be sold.

Ask at your local branch for latest stock availability





Depending on which icons are present, this indicates what control gear changes are required for the retrofit LED lamps to operate.



EASY INSTALL

This icon indicates that the process to retrofit to this LED lamp is much easier as only the starter needs to be removed or replaced when operating on switch start control gear.



ADVANCED INSTALL

This icon indicates that the process to retrofit to this LED lamp is more complex as the bypassing of control gear is required.



Direct Retrofit
– no change required

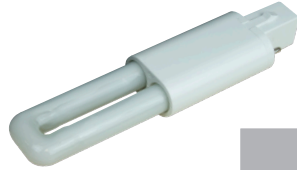
NOTE: Fusion Lamps always recommends the bypassing of all control gear in every installation for increased efficiency and longevity. Wiring diagrams are available upon request.

LED Lamp Alternatives

G23 2 Pin LED Single Compact Lamp



- Low power consumption
- Long lamp life
- Low surface temperature
- Not Suitable for emergency lighting
- Suitable replacement for compact fluorescent lamps
- Ideal for use in commercial and retail applications



2 YEARS
GUARANTEE



EASY
INSTALL



ADVANCED
INSTALL*

* when replacing within a high frequency fixture

FROM
£7.38
+VAT

Fusion Ref	Code	Wattage	Length	Lumens	1+
Non-Dimmable - Cool White - 4000K					
FPLS3CW/2P	2838-4273	3W	137 mm	370 lm	£7.38
FPLS4.5CW/2P	2838-4276	4.5W	165 mm	580 lm	£8.13
FPLS5CW/2P	2838-4279	5W	220 mm	700 mm	£9.38

G24D 2 Pin LED Double Compact Lamp



- Low power consumption
- Long lamp life
- Low surface temperature
- Not Suitable for emergency lighting
- Suitable replacement for compact fluorescent lamps
- Ideal for use in commercial and retail applications



2 YEARS
GUARANTEE



EASY
INSTALL



ADVANCED
INSTALL*

* when replacing within a high frequency fixture

FROM
£8.75
+VAT

Fusion Ref	Code	Wattage	Length	Lumens	1+
Non-Dimmable - Cool White - 4000K					
FPLD4.5CW/2P	2838-4228	4.5W	116 mm	660 lm	£8.75
FPLD6CW/2P	2838-4234	6W	148 mm	835 mm	£9.88
FPLD9CW/2P	2838-4246	9W	171 mm	1300 lm	£10.63
Non-Dimmable - White - 3500K					
FPLD6W/2P	2838-4240	6W	148 mm	580 lm	£9.88
FPLD9W/2P	2838-4252	9W	171 mm	1300 lm	£10.63

G24Q 4 Pin LED Double Compact Lamp



- Low power consumption
- Long lamp life
- Low surface temperature
- Not Suitable for emergency lighting
- Suitable replacement for compact fluorescent lamps
- Ideal for use in commercial and retail applications



2 YEARS
GUARANTEE



EASY
INSTALL



ADVANCED
INSTALL*

* when replacing within a high frequency fixture

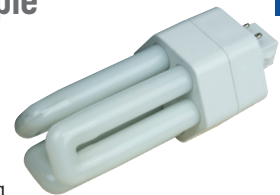
FROM
£8.75
+VAT

Fusion Ref	Code	Wattage	Length	Lumens	1+
Non-Dimmable - Cool White - 4000K					
FPLD4.5CW/4P	2838-4231	4.5W	109 mm	660 lm	£8.75
FPLD6CW/4P	2838-4237	6W	145 mm	835 mm	£9.88
FPLD9CW/4P	2838-4249	9W	164 mm	1300 lm	£10.63
Non-Dimmable - White - 3500K					
FPLD6W/4P	2838-4243	6W	148 mm	580 lm	£9.88
FPLD9W/4P	2838-4255	9W	171 mm	1300 lm	£10.63

GX24Q 4 Pin LED Triple Compact Lamp



- Low power consumption
- Long lamp life
- Low surface temperature
- Not Suitable for emergency lighting
- Suitable replacement for compact fluorescent lamps
- Ideal for use in commercial and retail applications



2 YEARS
GUARANTEE



EASY
INSTALL



ADVANCED
INSTALL*

* when replacing within a high frequency fixture

FROM
£10.88
+VAT

Fusion Ref	Code	Wattage	Length	Lumens	1+
Non-Dimmable - Cool White - 4000K					
FPLT6CW/4P	2838-4288	6W	118 mm	840 lm	£10.88
FPLT9CW/4P	2838-4291	9W	138 mm	1260 lm	£11.63
FPLT10CW/4P	2838-4282	10W	146 mm	1375 mm	£12.38
FPLT13CW/4P	2838-4285	13W	167 mm	1780 mm	£14.38

G211 4 Pin LED PLL Lamp



- Low power consumption
- Long lamp life
- Low surface temperature
- Not Suitable for emergency lighting
- Suitable replacement for compact fluorescent lamps
- Ideal for use in commercial and retail applications



2 YEARS
GUARANTEE



EASY
INSTALL



ADVANCED
INSTALL*

* when replacing within a high frequency fixture

FROM
£9.88
+VAT

Fusion Ref	Code	Wattage	Length	Lumens	1+
Non-Dimmable - Cool White - 4000K					
FPLL8CW	2838-4270	8W	230 mm	1000 lm	£9.88
FPLL12CW	2838-4258	12W	325 mm	1475 lm	£10.63
FPLL18CW	2838-4261	18W	417 mm	2250 lm	£12.38
FPLL20CW	2838-4264	20W	537 mm	2500 lm	£13.13
FPLL24CW	2838-4267	24W	537 mm	3200 lm	£14.88

LED Lamp Alternatives

GR8 2D 2 Pin LED Lamp



- LED replacement for CFLni - Retrofit & Direct to Mains operation
- Suitable for GR8/ 2pins base with Electromagnetic Ballast [CCG] or AC mains
- Like for like retrofit replacement

- LED Lifetime: 25,000 hours [L70/B50]
- No UV output
- Suggested replacement for 16W & 28W 2D fluorescent lamps



EASY
INSTALL



ADVANCED
INSTALL*

* when replacing within a high frequency fixture

Fusion Ref	Code	Wattage	Height	Width	Depth	Lumens	1+
Non-Dimmable - Cool White - 4000K							
F2D7CW/2P	2860-8319	7W	135 mm	135 mm	33 mm	750 lm	£11.13
F2D13CW/2P	2860-8310	13W	200 mm	200 mm	33 mm	1500 lm	£16.13



3 YEARS
GUARANTEE

FROM
£11.13
+VAT

GR10q 2D 4 Pin LED Lamp



- LED replacement for CFLni - Retrofit & Direct to Mains operation
- Suitable for GR10q/ 4pins base Direct to AC mains ONLY
- Like for like retrofit replacement

- LED Lifetime: 25,000 hours [L70/B50]
- No UV output
- Suggested replacement for 16W, 28W & 38W 2D fluorescent lamps



EASY
INSTALL



ADVANCED
INSTALL*

* when replacing within a high frequency fixture

Fusion Ref	Code	Wattage	Height	Width	Depth	Lumens	1+
Non-Dimmable - Cool White - 4000K							
F2D7CW/4P	2860-8319	7W	135 mm	135 mm	33 mm	750 lm	£11.13
F2D13CW/4P	2860-8313	13W	200 mm	200 mm	33 mm	1500 lm	£16.13
F2D17CW/4P	2860-8316	17W	200 mm	200 mm	33 mm	1870 lm	£19.13



3 YEARS
GUARANTEE

FROM
£11.13
+VAT

8W LED CCT Selectable Gear Tray



- Retro fit/replaceable - fits most existing 2D/LED Bulkheads
- Selectable colour temperature: Warm white 3000K, cool white 4000K and daylight 5000K
- Push-fit [loop-in/loop out] terminal block



3 YEARS
GUARANTEE

FROM
£23.75
+VAT

Fusion Ref	Code	Height	Ø	Lumens	1+
FGT8	2861-7526	137 mm	190 mm	1050 lm	£23.75
FGT8E3	2861-7529	30 mm	190 mm	1050 lm	£62.37

16W LED CCT Selectable Gear Tray



- Retro fit/replaceable - fits most existing 2D/LED Bulkheads
- Selectable colour temperature: Warm white 3000K, cool white 4000K and daylight 5000K
- Push-fit [loop-in/loop out] terminal block



3 YEARS
GUARANTEE

FROM
£29.88
+VAT

Fusion Ref	Code	Height	Ø	Lumens	1+
FGT16	2861-7514	30 mm	243 mm	2050 lm	£29.88
Emergency					
FGT16E3	2861-7517	30 mm	243 mm	2050 lm	£67.37
Sensor					
FGT16S	2861-7520	30 mm	243 mm	2050 lm	£56.24
Sensor Emergency					
FGT16SE3	2861-7523	30 mm	243 mm	2050 lm	£94.87

LED T5 Glass Tubes



- Suitable replacement for fluorescent tubes
- Beam angle: 200°
- Lamp life: 25,000 hrs



**ADVANCED
INSTALL***

* when replacing within a
high frequency fixture

**3 YEARS
GUARANTEE**

**FROM
£11.14
+VAT**

Fusion Ref	Code	Length	Wattage	Lumens	1+
Non-Dimmable - Cool White - 4000K					
EDLEDTUBE5/8CW	2772-8041	2 ft	8W	880 lm	£11.14
EDLEDTUBE5/12CW	2772-8032	3 ft	12W	1320 lm	£13.39
EDLEDTUBE5/16CW	2772-8035	4 ft	16W	1760 lm	£15.64
EDLEDTUBE5/20CW	2772-8038	5 ft	20W	2200 lm	£17.89

LED T8 Glass Tubes



- Suitable replacement for fluorescent tubes
- Complete with LED starter for use in switch start retrofit installations
- Beam angle: 300°
- Lamp life: 25,000 hrs



**EASY
INSTALL**



**ADVANCED
INSTALL***

* when replacing within a
high frequency fixture

**3 YEARS
GUARANTEE**

**FROM
£7.44
+VAT**

Fusion Ref	Code	Length	Wattage	Lumens	1+
Non-Dimmable - Cool White - 4000K					
EDLEDTUBE/G2FT	2096-0905	2 ft	9W	1080 lm	£7.44
EDLEDTUBE/G3FT	2096-0911	2 ft	14W	1680 lm	£9.95
EDLEDTUBE/G4FT	2096-0923	4 ft	18W	2160 lm	£11.71
EDLEDTUBE/G5FT	2096-0932	5 ft	24W	2880 lm	£14.49
EDLEDTUBE/G6FT	2096-0938	6 ft	30W	3600 lm	£27.58
EDLEDTUBE/8FT/CW	1953-4204	8 ft	36W	3600 lm	£45.95

LED T5 Tri-Colour Glass Tubes



- Suitable replacement for fluorescent tubes
- Selectable colour temperature: Warm white 3000K, cool white 4000K and daylight 6500K
- Beam angle: 200°
- Lamp life: 25,000 hrs



Fusion Ref	Code	Length	Wattage	Lumens	1+
Non-Dimmable					
EDLEDTUBE5/8CCT	2834-0626	2 ft	8W	880 lm	£12.38
EDLEDTUBE5/12CCT	2834-0617	3 ft	12W	1320 lm	£14.85
EDLEDTUBE5/16CCT	2834-0620	4 ft	16W	1760 lm	£17.33
EDLEDTUBE5/20CCT	2834-0623	5 ft	20W	2200 lm	£19.69



**ADVANCED
INSTALL**

**3 YEARS
GUARANTEE**

**FROM
£12.38
+VAT**

LED T8 Tri-Colour Glass Tubes



- Suitable replacement for fluorescent tubes
- Complete with LED starter for use in switch start retrofit installations
- Selectable colour temperature: Warm white 3000K, cool white 4000K and daylight 6500K
- Beam angle: 300°
- Lamp life: 25,000 hrs



**EASY
INSTALL**



**ADVANCED
INSTALL***

* when replacing within a
high frequency fixture

**3 YEARS
GUARANTEE**

**FROM
£6.87
+VAT**

Fusion Ref	Code	Length	Wattage	Lumens	1+
Non-Dimmable					
EDLEDTUBE/G2FT/CC	2772-8017	2 ft	9W	945 lm / 1080 lm / 990 lm	£6.87
EDLEDTUBE/G3FT/CC	2772-8020	3 ft	14W	1540 lm / 1680 lm / 1680 lm	£7.99
EDLEDTUBE/G4FT/CC	2772-8023	4 ft	18W	1980 lm / 2160 lm / 2160 lm	£9.34
EDLEDTUBE/G5FT/CC	2772-8026	5 ft	24W	2640 lm / 2880 lm / 2880 lm	£10.47
EDLEDTUBE/G6FT/CC	2772-8029	6 ft	30W	3300 lm / 3600 lm / 3600 lm	£20.14

LED GY6.35 Capsule Lamps 12V

- Suitable replacement for 35W halogen lamps
- Lamp life: 15,000 hrs



DIRECT RETROFIT
- no change required

**1 YEAR
GUARANTEE**

Fusion Ref	Code	Wattage	Lumens	1+
Non-Dimmable - Warm White - 3000K				
FGY6.35/2.6WW	2786-2006	2.6W	300 lm	£7.63
FGY6.35/4WW	2786-2012	4W	470 lm	£9.18
Non-Dimmable - Cool White - 4000K				
FGY6.35/2.6CW	2786-2003	2.6W	300 lm	£7.63
FGY6.35/4CW	2786-2009	4W	470 lm	£9.18

FROM
£7.63
+VAT

2W LED G4 Capsule Lamps 12V - Pack of 2

- Suitable replacement for 10 and 20W halogen lamps
- Lamp life: 15,000 hrs
- Guarantee: 1 Year



DIRECT RETROFIT
- no change required

FROM
£10.51
+VAT

Fusion Ref	Code	Lumens	1+
Non-Dimmable - Warm White - 3000K			
FG4/2P	2196-2761	200 lm	£10.51
Non-Dimmable - Cool White - 4000K			
FG4CW/2P	2247-2401	200 lm	£10.51

3.3W LED G9 Capsule Lamps 230V - Pack of 2

- Suitable replacement for 40W halogen lamps
- Lamp life: 15,000 hrs
- Guarantee: 1 Year



DIRECT RETROFIT
- no change required

FROM
£10.95
+VAT

Fusion Ref	Code	Lumens	1+
Non-Dimmable - Warm White - 3000K			
FG9/2P	2196-2764	350 lm	£10.95
Non-Dimmable - Cool White - 4000K			
FG9CW/2P	2247-2404	350 lm	£10.95

4.4W LED G9 Capsule Lamps 230V

- Suitable replacement for 40W halogen lamps
- Lamp life: 15,000 hrs
- Guarantee: 1 Year



DIRECT RETROFIT
- no change required

FROM
£6.75
+VAT

Fusion Ref	Code	Lumens	1+
Non-Dimmable - Warm White - 3000K			
FG9/D	2658-6514	470 lm	£6.75
Non-Dimmable - Cool White - 4000K			
FG9CW/D	2705-9821	480 lm	£6.75

Need a product datasheet?

Download at cef.co.uk



Free Lighting Design Service

Exclusively from Fusion Luminaires

Our comprehensive service includes:



Plans

Product overview, representational floor plan and placement references.



Results Overview

Illumination levels and product requirements for individual rooms.



Optional 3D Renderings

Visual representation of the final installation.



Full Product Specifications

Detailed specs for all products used.



Optional Energy Savings Report

Showcase usage and potential monetary savings.



Transform your space with our expert lighting design!





LED Luminaire Alternatives

LED Tri-Colour Battens IP20

- Steel body with powder-coated finish
- Polycarbonate UV stabilised diffuser
- Quick-release access system with LED array safety cords, for easy installation
- Ideal retrofit option for existing T8 or T5 fixtures
- Colour temperature: Warm white 3000K, cool white 4000K and daylight 6500K
- Lamp life: 50,000 hrs
- Dimensions: 72 mm [W] x 72.5 mm [D]
- Mounted: Surface or suspended

Microwave features:

- Detection angle [ceiling]: 360°
[wall]: 150°
- Detection range: 10 m
- Timer adjustment: 5 secs, 30 secs,
90 secs, 5 mins, 20 mins or 30 mins

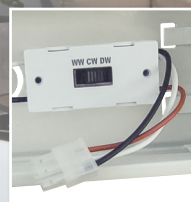
**1 YEAR
ON-SITE
WARRANTY**

**5 YEARS
WARRANTY
[2 YEARS
EMERGENCY]**



cef.co.uk for
video demonstration

Fusion Ref	Code	Size	Wattage	Sensor	Lumens	Length	1+
Standard							
FBAT2CC	2756-5063	2 ft	10W	No	1200 lm	600 mm	£29.98
FBAT4CC	2756-5066	4 ft	20W	No	2400 lm	1200 mm	£31.98
FBAT4HOCC	2756-5075	4 ft	40W	No	4800 lm	1200 mm	£47.87
FBAT5CC	2756-5081	5 ft	30W	No	3600 lm	1500 mm	£39.79
FBAT5CCS	2756-5093	5 ft	30W	Microwave	3600 lm	1500 mm	£62.31
FBAT5HOCC	2756-5099	5 ft	60W	No	7200 lm	1500 mm	£51.50
FBAT5HOCCS	2756-5105	5 ft	60W	Microwave	7200 lm	1500 mm	£81.93
FBAT6CC	2756-5111	6 ft	40W	No	4800 lm	1800 mm	£47.14
FBAT6HOCC	2756-5117	6 ft	67W	No	8040 lm	1800 mm	£66.12
3 hr Maintained Emergency							
FBAT4CCE3	2756-5072	4 ft	20W	No	2400 lm	1200 mm	£77.48
FBAT4HOCCCE3	2756-5078	4 ft	40W	No	4800 lm	1200 mm	£93.37
FBAT5CCE3	2756-5087	5 ft	30W	No	3600 lm	1500 mm	£85.74
FBAT5CCCE3	2756-5096	5 ft	30W	Microwave	3600 lm	1500 mm	£107.37
FBAT5HOCCCE3	2756-5102	5 ft	60W	No	7200 lm	1500 mm	£97.19
FBAT5HOCCCE3	2756-5108	5 ft	60W	Microwave	7200 lm	1500 mm	£121.99
FBAT6CCE3	2756-5114	6 ft	40W	No	4800 lm	1800 mm	£93.20
FBAT6HOCCCE3	2756-5120	6 ft	67W	No	8040 lm	1800 mm	£111.73



FROM
£29.98
+VAT

LED Non-Corrosive Fittings IP65

- Polycarbonate body and purpose-designed opal diffuser
- Colour temperature: Cool white 4000K
- Lamp life: 50,000 hrs
- Impact rating: IK08
- Mounted: Surface or suspended

Microwave features:

- Detection angle [ceiling]: 360°
[wall]: 150°
- Detection range: 10 m
- Timer adjustment: 5 secs, 30 secs, 90 secs, 5 mins, 20 mins or 30 mins



Includes:

- Stainless steel fixing clips
- Gear tray extension cords

Fusion Ref	Code	Size	Wattage	Lumens	Length	Width	Depth	1+
Standard								
FNCF2	2613-7831	2 ft	9W	1100 lm	600 mm	96 mm	79 mm	£22.25
FNCF2H0	2613-7834	2 ft	18W	2200 lm	600 mm	96 mm	79 mm	£28.61
FNCF4	2613-7894	4 ft	18W	2200 lm	1200 mm	96 mm	79 mm	£30.15
FNCF4H0	2613-7840	4 ft	40W	4800 lm	1200 mm	96 mm	79 mm	£39.88
FNCF5	2613-7846	5 ft	23W	2800 lm	1500 mm	96 mm	79 mm	£34.70
FNCF5H0	2613-7852	5 ft	48W	5800 lm	1500 mm	96 mm	79 mm	£45.33
FNCF6	2613-7858	6 ft	27W	3200 lm	1800 mm	96 mm	83 mm	£42.60
FNCF6H0	2613-7864	6 ft	55W	6600 lm	1800 mm	96 mm	83 mm	£62.22
Standard - Microwave Sensor								
FNCF5S	2726-9278	5 ft	23W	2800 lm	1500 mm	96 mm	79 mm	£57.68
FNCF5HOS	2726-9272	5 ft	48W	5800 lm	1500 mm	96 mm	79 mm	£70.76
3 hr Maintained Emergency								
FNCF4E3	2613-7837	4 ft	18W	2200 lm	1200 mm	96 mm	79 mm	£68.13
FNCF4H0E3	2613-7843	4 ft	40W	4800 lm	1200 mm	96 mm	79 mm	£82.84
FNCF5E3	2613-7849	5 ft	23W	2800 lm	1500 mm	96 mm	79 mm	£75.39
FNCF5H0E3	2613-7855	5 ft	48W	5800 lm	1500 mm	96 mm	79 mm	£88.38
FNCF6E3	2613-7861	6 ft	27W	3200 lm	1800 mm	96 mm	83 mm	£85.29
FNCF6H0E3	2613-7867	6 ft	55W	6600 lm	1800 mm	96 mm	83 mm	£107.09
3 hr Maintained Emergency - Microwave Sensor								
FNCF5SE3	2726-9281	5 ft	23W	2800 lm	1500 mm	96 mm	79 mm	£100.55
FNCF5H0SE3	2726-9275	5 ft	48W	5800 lm	1500 mm	96 mm	79 mm	£117.63



**1 YEAR
ON-SITE
WARRANTY**

**5 YEARS
WARRANTY
[2 YEARS
EMERGENCY]**

FROM
£22.25
+VAT



LED Linear Vapour Proof Fittings IP65

- Slim extruded single-piece polycarbonate body and opal diffuser
- Colour temperature: Cool white 4000K
- Lamp life: 25,000 hrs
- Dimensions: 53 mm[W] x 35 mm[D]
- Mounted: Surface or suspended



Includes:

- Stainless steel fixing clips
- Entry gland
- Quick-fit terminals



Visit cef.co.uk for video demonstration

Fusion Ref	Code	Size	Wattage	Lumens	Length	1+
FVP4FT	2607-5575	4 ft	36W	3600 lm	1261 mm	£21.71
FVP5FT	2607-5578	5 ft	45W	4500 lm	1541 mm	£28.07
FVP6FT	2607-5581	6 ft	60W	6000 lm	1841 mm	£42.96

2 YEARS
WARRANTY

FROM
£21.71
+VAT

LED Slimline Colour Selectable Under Cabinet Lights IP20

- Suitable replacement for traditional T4 and T5 fluorescent fittings
- Compact, surface mounted design
- Selectable colour temperature: Warm white 3000K and cool white 4000K
- Beam angle: 150°
- Lamp life: 30,000 hrs

Includes:

- 1.5 m Mains cable
- 170 mm Link cable
- Fixing brackets
- Connector

Fusion Ref	Code	Wattage	Length	Lumens	1+
FLL4CC225	2795-8372	4W	225 mm	400 lm	£10.15
FLL4CC	2795-8369	4W	288 mm	450 lm	£10.65
FLL7CC	2795-8378	7W	516 mm	850 lm	£13.12
FLL13CC	2795-8360	13W	849 mm	1500 lm	£17.91
FLL18CC	2795-8363	18W	1149 mm	1800 lm	£23.10



3 YEARS
WARRANTY



CCT Colour Select

FROM
£10.15
+VAT

30W Backlit LED TP[b] Panel IP20

- Aluminium body with low glare opal polycarbonate diffuser
- Stepped frame for flush ceiling grid mounting
- Optional emergency conversion pack – sold separately [2628-3835]
- Non-dimmable
- Lumen output: 3,150 lm
- Lamp life: 50,000 hrs
- Mounted: Recessed

1 YEAR
ON-SITE
WARRANTY5 YEARS
WARRANTY

Includes:

- Plug-and-play driver

Fusion Ref	Code	Length	Width	Depth	1+
Cool White – 4000K					
FP66/CW	2831-3992	595 mm	595 mm	34 mm	£21.95

FROM
£21.95
+VAT

36W Backlit TP[a] Tri-Colour LED Panel IP20

- Aluminium body with low glare opal polycarbonate diffuser
- Stepped frame for flush ceiling grid mounting
- Selectable colour temperature: Warm white 3000K, cool white 4000K and daylight 6500K
- Optional emergency conversion pack – sold separately [2628-3835]
- Non-dimmable
- Lumen output: 3,600 lm
- Lamp life: 50,000 hrs
- Mounted: Recessed

1 YEAR
ON-SITE
WARRANTY5 YEARS
WARRANTY

Includes:

- Plug-and-play driver
- Push-fit loop in / out terminal block

Fusion Ref	Code	Length	Width	Depth	1+
FP66/CC	2831-3989	595 mm	595 mm	34 mm	£26.95

FROM
£26.95
+VAT

40W LED Panel Frame IP20

- Uniform light distribution
- Lumen output: 4000 lm
- Lamp life: 25,000 hrs
- Mounted: Recessed
- Optional emergency pack available



1 YEAR
ON-SITE
WARRANTY

5 YEARS
WARRANTY

Includes:

- Plug-and-play driver

Fusion Ref	Code	Length	Width	Depth	1+
Cool White - 4000K					
FPF66CW	2789-8966	595 mm	595 mm	13.5 mm	£24.95

FROM
£24.95
+VAT



12W / 16W Dome LED Tri-Colour Bulkheads IP65

- Polycarbonate body and opal diffuser
- Screwless twist-and-lock bezel
- Selectable colour temperature: Warm white 3000K, cool white 4000K or daylight 6500K
- Switch located on the driver takes the fitting down to 12W for increased energy savings
- Lumen output [12W]: 1,200 - 1,300 lm
[16W]: 1,600 - 1,700 lm

Microwave features:

- Detection angle: 360°
- Detection range: 10 m
- Timer adjustment: 5 secs - 10 mins

Includes:

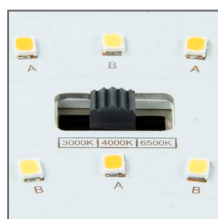
- Standard white bezel

Optional Bezels:



CCT SELECTABLE

- Dome fittings have a built-in CCT colour select function [WW / CW / DL]
- The colour temperature can be changed by adjusting the switch on the LED gear tray



WATTAGE SELECTABLE

- The Dome Bulkhead has a built-in Wattage selection function [12W or 16W]. The wattage can be changed by adjusting the switch on the LED Driver.

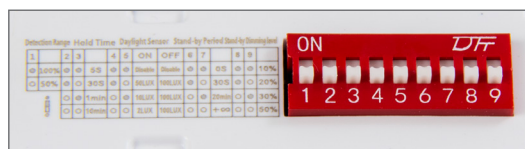


ON = 16W

1 = 12W

MICROWAVE SENSOR

- Dip switch programmable microwave sensor with corridor function is also available.



EMERGENCY

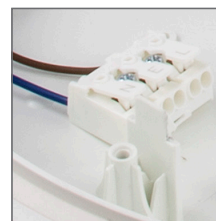
- Maintained emergency [3 hr / 180 mins] versions available
- Emergency lumen output: 80 lm



Fusion Ref	Code	Sensor	Lamp Life	Depth	Ø	1+
Standard						
FDOMECC	2704-3078	No	30000 hrs	82.5 mm	320 mm	£14.92
FDOMECCS	2704-3147	Microwave	30000 hrs	82.5 mm	320 mm	£29.91
3 hr Maintained Emergency						
FDOMECCCE3	2704-3144	No	30000 hrs	82.5 mm	320 mm	£31.00
FDOMECCSE3	2704-3150	Microwave	30000 hrs	82.5 mm	320 mm	£46.26
Fusion Ref	Code	Colour	1+			
Bezels - To Be Ordered Separately						
FDOMECH	2722-3345	Chrome	£7.72			
FDOMEPB	2722-3348	Polished Brass	£12.63			

WIRING

- Push-fit [loop-in / loop-out] terminal block



ACCESS

- Tool-free hinged gear tray



**1 YEAR
ON-SITE
WARRANTY**

**5 YEARS
WARRANTY
[2 YEARS
EMERGENCY]**



Visit cef.co.uk for
video demonstration

**FROM
£14.92
+VAT**

16W Quad LED Tri-Colour Square Bulkheads IP65

- Polycarbonate body and diffuser
- Selectable colour temperature: Warm white 3000K, cool white 4000K and daylight 6500K
- Lamp life: 30,000 hrs
- Dimensions: 250 mm[L] x 250 mm[W] x 90 mm[D]

Fusion Ref	Code	Colour	Diffuser	Lumens	1+
Standard					
FQUADBOP16	2823-0181	Black	Opal	1600 lm	£29.06
FQUADBP16	2823-0193	Black	Prismatic	1900 lm	£29.06
FQUADWOP16	2823-0205	White	Opal	1600 lm	£29.06
FQUADWP16	2823-0217	White	Prismatic	1900 lm	£29.06
3 hr Maintained Emergency					
FQUADBOP16/E3	2823-0184	Black	Opal	1600 lm	£50.86
FQUADBP16/E3	2823-0196	Black	Prismatic	1900 lm	£50.86
FQUADWOP16/E3	2823-0208	White	Opal	1600 lm	£50.86
FQUADWP16/E3	2823-0220	White	Prismatic	1900 lm	£50.86



Opal



Prismatic

3 YEARS
WARRANTY

FROM
£29.06
+VAT

The CEF Trade App

Like your music app,
but **with more AC and DC**

Search and order **thousands of products** from your pocket

- Check stock levels
- Pay securely
- Scan catalogue pages using your smartphone
- Create a trade account
- Check invoices, statements and credit notes
- Get delivery alerts direct to your phone
- Quotations

Download on the
App Store



GET IT ON
Google Play



FREE
to download

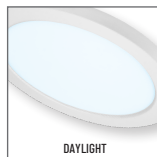
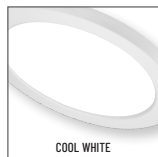
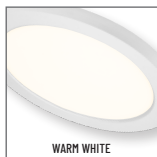
LED Circular Flexi-Fit Tri-Colour Downlights IP20

- White body with opal polycarbonate diffuser
- Integrated switch to select colour temperatures
- Adjustable spring clips allow recessed mounting in downlight holes
- Selectable colour temperature: Warm white 3000K, cool white 4000K and daylight 6000K
- Interchangeable magnetic bezels available – sold separately
- Mounted: Surface or recessed
- Lamp life: 30,000 hrs

Includes:
■ Integrated driver

CCT SELECTABLE

CCT Colour Select switch [WW / CW / DW]



6W Downlight

- Lumen output: 390, 420 or 450 lm

Fusion Ref	Code	Depth	Ø	Cut Out Ø	1+
FFF6CC	2606-9203	15 mm	140 mm	55 - 100 mm	£15.89
Fusion Ref	Code	Finish			1+
Magnetic Bezel					
FFFB6CH	2606-9218	Chrome			£4.72
FFFB6B	2606-9215	Matt Black			£4.72
FFFB6SN	2606-9221	Satin Nickel			£4.72

12W Downlight

- Lumen output: 900, 930 or 960 lm

Fusion Ref	Code	Depth	Ø	Cut Out Ø	1+
FFF12CC	2827-5349	15 mm	165 mm	55 - 125 mm	£17.94
Fusion Ref	Code	Finish			1+
Magnetic Bezel					
FFFB12CH	2827-5343	Chrome			£5.33
FFFB12B	2827-5340	Matt Black			£5.33
FFFB12SN	2827-5346	Satin Nickel			£5.33

18W Downlight

- Lumen output: 1,500, 1,530 or 1,560 lm

Fusion Ref	Code	Depth	Ø	Cut Out Ø	1+
FFF18CC	2604-0979	15 mm	217 mm	55 - 175 mm	£26.34
Fusion Ref	Code	Finish			1+
Magnetic Bezel					
FFFB18CH	2606-9285	Chrome			£6.05
FFFB18B	2606-0982	Matt Black			£6.05
FFFB18SN	2606-0988	Satin Nickel			£6.05

24W Downlight

- Lumen output: 1,980, 2,010 or 2,040 lm

Fusion Ref	Code	Depth	Ø	Cut Out Ø	1+
FFF24CC	2606-9200	15 mm	290 mm	60 - 250 mm	£39.26
Fusion Ref	Code	Finish			1+
Magnetic Bezel					
FFFB24CH	2606-9209	Chrome			£8.81
FFFB24B	2606-9206	Matt Black			£8.81
FFFB24SN	2606-9212	Satin Nickel			£8.81



MAGNETIC BEZELS

The Flexi-Fit bezel is white as standard. Additional magnetic bezels are sold separately, allowing the option to tailor the fitting to preferred aesthetics.

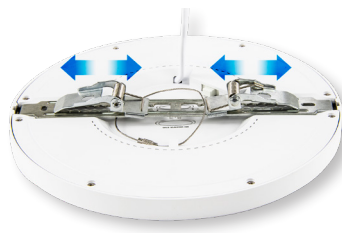
SURFACE MOUNTED

By using the bracket, screws and wall plugs, the fitting can be surface mounted.



RECESS MOUNTED

The spring-clips are adjustable, which allows it to be used in cut-out sizes from 55 to 250 mm depending on the luminaire wattage.



Visit cef.co.uk for video demonstration

**2 YEARS
WARRANTY**

FROM
£15.89
+VAT

LED CCT Low Profile Commercial Downlights IP20

- White body with opal polycarbonate diffuser
- Ideal replacement for existing CFL fixtures
- Mounted: Recessed
- Lamp life: 25,000 hrs
- Warranty: 2 Years

Includes:

- Plug-and-play driver

Fusion Ref	Code	Wattage	Lumens	Depth	Ø	Cut Out Ø	1+
FCD6CC	2861-7577	6W	500 lm	27 mm	128 mm	115mm	£12.00
FCD12CC	2861-7568	12W	1200 lm	27 mm	170 mm	155 mm	£15.60
FCD18CC	2861-7571	18W	1850 lm	27 mm	229 mm	210 mm	£20.40
FCD24CC	2861-7574	24W	2500 lm	27 mm	298 mm	280 mm	£26.40



**2 YEARS
WARRANTY**

FROM
£12.00
+VAT

2W Maintained Emergency Conversion Pack

- Emergency conversion kit for LED Flexi-Fit downlight from Fusion Luminaires
- Manual test button
- Plug and play connections
- Maintained Emergency [3hrs/180mins]



Fusion Ref	Code	Description	1+
FE3FF	2756-5060	4.1W Maintained Emergency Conversion Pack for LED Flexifit Downlights	£57.23

ONLY
£57.23
+VAT

4.1W Maintained Emergency Conversion Kit IP20

- All-in-one emergency conversion kit for Fusion Low Profile LED circular downlights
- Lithium-ion phosphate [LiFePO4] battery offers excellent reliability
- Plug-and-play connections
- Manual test button
- Emergency duration: 3 hrs



**2 YEARS
WARRANTY**

Fusion Ref	Code	Description	Length	Width	Depth	1+
FE3CD	2634-4570	4.1W Maintained Emergency Conversion Pack for LED Circular Downlights	213 mm	95 mm	40 mm	£49.95

FROM
£49.95
+VAT

Sustainable Electrical Waste Recycling

**waste
experts**
flexible - reliable - responsible

Protecting our future, together

CEF are the **only electrical distributor in the UK** with an in-house electrical waste recycling facility, offering a complete one-stop recycling service and ensuring compliance with all current legislation.

Did you know?

- We recycle **over 1 million lamps** each year.
- We recycle **more electrical waste** than any other UK distributor.
- **98%** of the electrical waste we receive is recycled.
- Our nationwide network of **over 390 branches** provides convenient service.



Visit **wasteexperts.co.uk**
for more information



5 025110 929190
CEFBANCAT
Pricing shown for illustrative purposes only.



**YOUR
ELECTRICAL
EXPERTS**

Contact your local branch for more details

